

BRAUN

WaterFlex



Type 5758
Modèle 5758
Modelo 5758

www.braun.com

WF1s



English	6
Français	15
Español	23

Thank you for purchasing a Braun product.
We hope you are completely satisfied with
your new Braun shaver.

If you have any questions, please call:

US residents 1-800-BRAUN-11

1-800-272-8611

Canadian residents 1-800-387-6657

Merci d'avoir fait l'achat d'un produit Braun.
Nous espérons que vous serez pleinement
satisfait de votre nouveau rasoir Braun.

Si vous avez des questions, veuillez appeler
Braun Canada : 1-800-387-6657

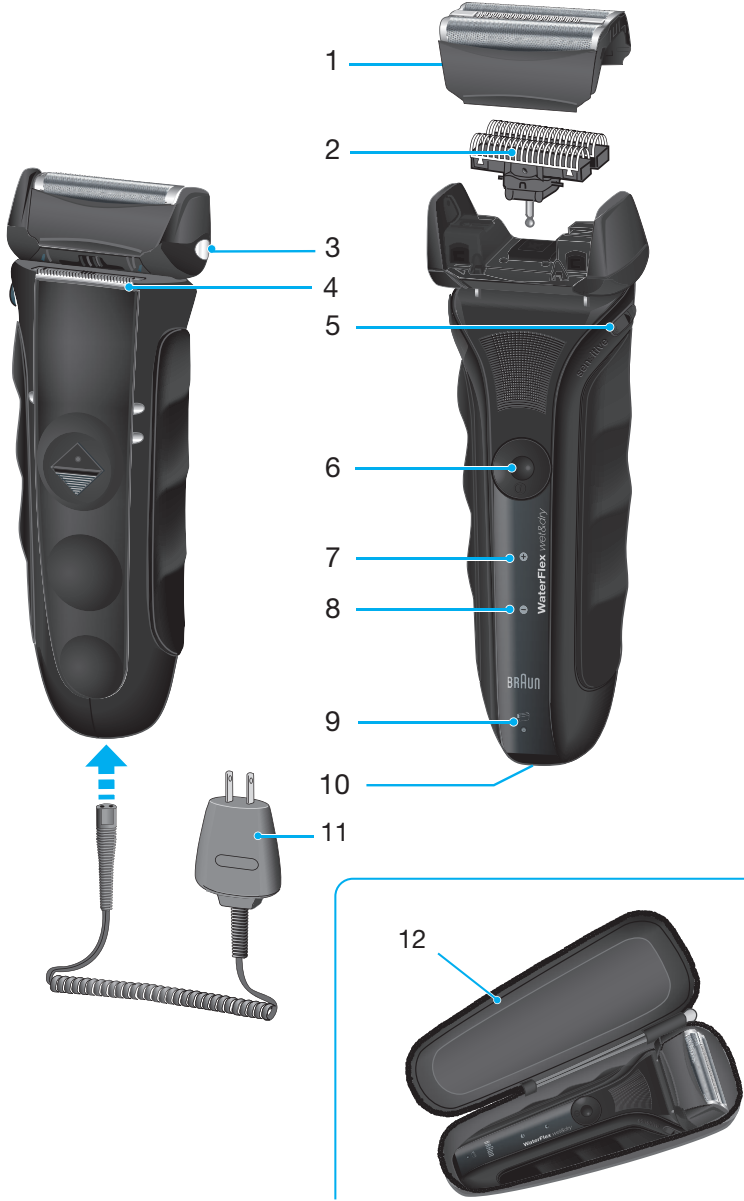
Gracias por haber comprado un producto
Braun.

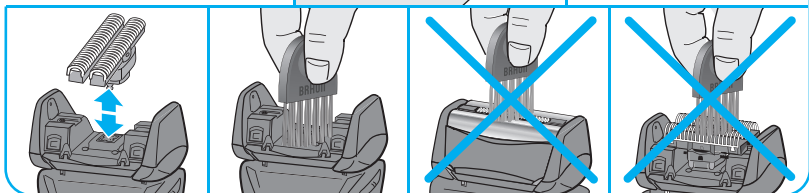
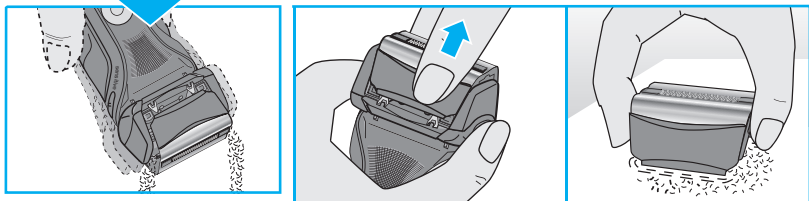
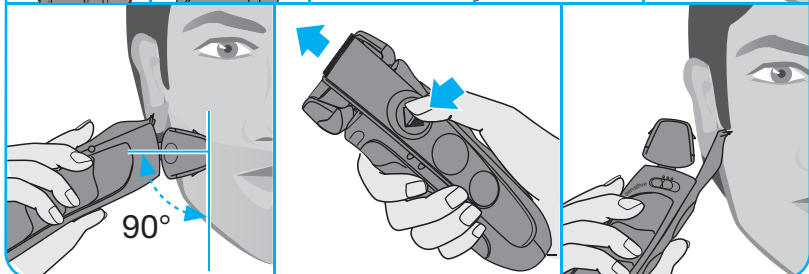
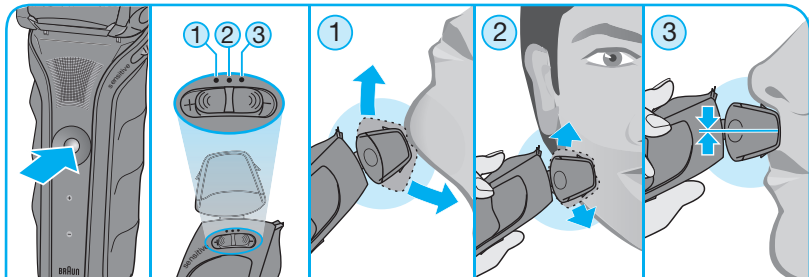
Esperamos que quede completamente
satisfecho con su nueva afeitadora Braun.

Si tiene alguna duda, por favor llame al:

En México 01(800) 508-5800







IMPORTANT SAFETY INSTRUCTIONS

When using an electrical appliance, basic precautions should always be followed, including the following:

Read all instructions before using this appliance.



When disconnected, the hand-held part of this shaving appliance may be used in a bath or shower. For safety reasons, the appliance can only be operated cordlessly.

DANGER

To reduce the risk of electric shock:

1. The charger unit is not for immersion in water or for use in shower.
2. Do not reach for a charger that has fallen into water. Unplug immediately.
3. Do not place, store or charge the appliance where it can fall or be pulled into a tub or sink. Do not place in or drop into water or other liquid.
4. Except when charging, always unplug this appliance from the electrical outlet immediately after using.
5. This appliance is provided with a special cord set with integrated Safety Extra Low Voltage power supply. Do not exchange or manipulate any part of it.
6. Do not use an extension cord with this appliance.

WARNING

To reduce the risk of burns, fire, electric shock, or injury to persons:

1. Close supervision is necessary when this appliance is used by, on, or near children or persons with disabilities.
2. Use this appliance only for its intended use as described in this manual. Do not use attachments not recommended by the manufacturer.
3. Never operate this appliance if it has a damaged cord or plug, if it is not working properly, if it has been dropped or damaged, or if the power supply has been dropped into water. Return the appliance to a service center for examination and repair.
4. Keep the cord away from heated surfaces.
5. Never drop or insert any object into any opening of the appliance.
6. Do not use outdoors or operate where aerosol (spray) products are being used or where oxygen is being administered.
7. Do not use this appliance with a damaged or broken foil, as serious skin injuries may occur.
8. Always attach plug to appliance first, then to outlet. To disconnect, turn all controls off, then remove plug from outlet.
9. When plugging to an electrical outlet outside North America, use a plug adapter to match the outlet's pin configuration.
10. **Caution:** The battery used in this device may present a fire or chemical burn hazard if mistreated. Do not disassemble, heat above 100 °C (212 °F), or incinerate.
11. Only use the special electric cord set provided with the appliance.

SAVE THESE INSTRUCTIONS

Our products are designed to meet the highest standards of quality, functionality and design. We hope you enjoy your new Braun product.

This appliance is designed for household use only.

Description

- 1 Shaver foil
- 2 Cutter block
- 3 Foil release buttons
- 4 Long hair trimmer
- 5 Comfort setting switch sensitive
- 6 On/off switch
- 7 Charging light
- 8 Low-charge light
- 9 Replacement light for shaving parts
- 10 Shaver power socket
- 11 Special cord set
- 12 Travel pouch

Charging

Recommended ambient temperature for charging is 41 °F to 95 °F / 5 °C to 35 °C. The battery may not charge properly or at all under extreme low or high temperatures. Recommended ambient temperature for shaving is 60 °F to 95 °F / 15 °C to 35 °C. Do not expose the shaver to temperatures higher than 122 °F / 50 °C for extended periods of time.

- Using the special cord set (11), connect the shaver to an electrical outlet with the motor switched off and charge it for at least one hour.
- A full charge provides up to 45 minutes of cordless shaving time. This may vary according to your beard growth.

Charging lights

During charging or when using the shaver, the charging light (7) will blink green.

When fully charged, it will light up continuously, provided the shaver is switched on or connected to an electrical outlet.

The red low-charge light (8) flashes when the battery is running low. You should be able to finish your shave.

Shaving

Press the on/off switch (6) to operate the shaver.

Comfort setting switch sensitive

Setting the shaver head according to your comfort needs.

The sensitive switch (5) provides three options for comfort setting:

- ① ⊕:
The shaver head is in full swing, freely follows the contours of your skin to provide more comfort.
- ② middle position:
The shaver head is semi-fixed for more control.
- ③ ⊖:
The shaver head is fixed for full control and precise handling in hard to reach areas.

Long hair trimmer

To trim sideburns, moustache or beard, slide the long hair trimmer (4) upwards.

Tips for the perfect dry shave

For best shaving results, Braun recommends you to follow 3 simple steps:

1. Always shave before washing your face.
2. At all times, hold the shaver at right angles (90°) to your skin.
3. Stretch your skin and shave against the direction of your beard growth.

Cleaning

Regular cleaning ensures better shaving performance. Rinsing the shaver head under running water after each shave is an easy and fast way to keep it clean.

- The hand-held unit should be detached from the power supply cord before cleaning. The shaver should not be used until it has dried.
- Press the foil release buttons (3) to lift the shaver foil. Do not remove the shaver foil completely.
- Switch the shaver on (cordless) and rinse the shaver head under hot running water until all residues have been removed. You may use liquid soap without abrasive substances. Rinse off all foam and let the shaver run for a few more seconds.
- Next, switch off the shaver and remove the shaver foil (1). Then leave the disassembled shaving parts to dry.
- If you regularly clean the shaver under water, then once a week apply a drop of light machine oil onto the long hair trimmer and shaver foil.

The following quick cleaning is another alternative cleaning method.

- Press the foil release buttons (3) to lift the shaver foil (do not remove the foil completely). Switch on the shaver for approx. 5–10 seconds so that the shaved stubbles can fall out.
- Switch off the shaver. Remove the shaver foil and tap it out on a flat surface. Using a brush, clean the inner area of the shaver head. However, do not clean the shaver foil nor the cutter block with the brush as this will damage them.

Keeping your shaver in top shape

Replacing the shaver foil and cutter block / reset

To maintain 100% shaving performance, replace the shaver foil (1) and cutter block (2), when the replacement symbol (9) lights up after about 18 months or when worn.

The replacement symbol will remind you during the next 7 shaves to replace the shaving parts. Then the shaver will automatically reset the display.

After you have replaced the shaving parts (foil and cutter block), press the on/off switch (6) for at least 5 seconds to reset the counter.

While doing so, the replacement light blinks and goes off when the reset is complete. The manual reset can be done at any time.

Accessories

Available at your dealer or Braun Service Centres:

Shaver foil and cutter block: 51B

Environmental notice



This appliance contains rechargeable batteries. To protect the environment, do not dispose of the appliance in the household waste at the end of its useful life. Disposal can take place at a Braun Service Center or appropriate collection sites.

Subject to change without notice.

For electric specifications, see printing on the special cord set.

How to obtain service in the USA

60 day money back satisfaction guarantee

Should your Braun product require service, please call 1-800-BRAUN 11 (272-8611) to be referred to the Authorized Braun Service Center closest to you.

To obtain service:

- A. Carry the product in to the Authorized Braun Service Center of your choice or,
- B. Ship the product to the Authorized Braun Service Center of your choice.
 - Pack the product well.
 - Ship the product prepaid and insured (recommended).
 - Include a copy of your proof of purchase to verify warranty coverage, if applicable.

To obtain original Braun replacement parts and accessories:

Contact a Braun Authorized Service Center.
Please call 1-800-BRAUN 11 (272-8611) to be referred to the Authorized Braun Service Center closest to you.

To speak to a Braun Consumer Service Representative:

Please call 1-800-BRAUN 11 (272-8611).

How to obtain service in Canada

60 day money back satisfaction guarantee

Should your Braun product require service, please call 1-800-387-6657 to be referred to the Authorized Braun Service Center closest to you.

To obtain service:

- A. Carry the product in to the Authorized Braun Service Center of your choice or,
- B. Ship the product to the Authorized Braun Service Center of your choice.
 - Pack the product well.
 - Ship the product prepaid and insured (recommended).
 - Include a copy of your proof of purchase to verify warranty coverage, if applicable.

To obtain original Braun replacement parts & accessories:

Contact a Braun Authorized Service Center.
Please call 1-800-387-6657 to be referred to the Authorized Braun Service Center closest to you.

To speak to a Braun Service Representative:

Please call 1-800-387-6657.

60 day money back satisfaction guarantee for men's grooming products

Braun Shavers Braun Beard Trimmers

Once you have tried your new Braun shaver or beard trimmer, we are confident you will appreciate its performance. We suggest using the product regularly for 2 to 3 weeks. If you are not satisfied with the product, please call 1-800-211-6661 within 60 days of purchase. Retain original cash receipt, product and all product parts, including the box. Do not return to the retailer for guarantee fulfillment.

Please note: No refunds will be made for any product damaged by accident, neglect or unreasonable use.

Your product must be shipped in its original packaging, with your original sales slip indicating the date of purchase.

Please include the following information when you return your product:

Name

Street

City

State

Zip code

Telephone number

Please allow 6-8 weeks for handling.

FOR USA ONLY

2 year limited warranty (foil and cutter cassette excluded)

Braun warrants this Braun shaver (except foil and cutter cassette) to be free of defects in material and workmanship for a period of two years from the date of original purchase.

If the shaver exhibits such a defect, Braun will, at its option, either repair or replace it for the consumer without charge.

Please call 1-800-Braun 11 (800-272-8611) to be referred to the authorized Braun Service Center closest to you.

This warranty does not cover foil and cutter cassette or damage resulting from accident, misuse, abuse, dirt, water, tampering, unreasonable use, normal wear, servicing performed or attempted by unauthorized service agencies or failure to provide reasonable and necessary maintenance, including recharging.

ALL IMPLIED WARRANTIES, INCLUDING ANY IMPLIED WARRANTY OF MERCHANTABILITY OR FITNESS FOR ANY PARTICULAR PURPOSE, ARE LIMITED IN DURATION TO 2 YEARS FROM DATE OF ORIGINAL PURCHASE. IN NO EVENT WILL BRAUN BE RESPONSIBLE FOR CONSEQUENTIAL DAMAGES RESULTING FROM THE USE OF THIS PRODUCT. Some states do not allow the exclusion or limitation of incidental or consequential damages, so the above limitation or exclusion may not apply to you.

This warranty gives you specific legal rights, and you may also have other legal rights which vary from state to state.

FOR CANADA ONLY

2 year limited warranty (foil and cutter cassette excluded)

In the event a Braun Shaver fails to function within 2 years from date of purchase, because of defects in material or workmanship, and the consumer returns the unit to an authorized service center, Braun Canada, will, at its option, either repair or replace the unit without additional charge to the consumer.

This guarantee does not cover any product, which has been damaged by dropping, tampering, wrong current, servicing performed or attempted by unauthorized service agencies, misuse or abuse, ***kinks in the shaver foil as well as the normal wear of the shearing parts.***

Exclusion of Warranties: The foregoing warranty is the sole warranty offered by Braun Canada. Braun Canada hereby disclaims any implied warranty or merchantability or fitness for any particular purpose. In no event will Braun Canada be responsible for consequential damages resulting from the use of this product.