

# BRAUN

## Series 7



720  
730  
750

Type 5674  
Type 5672



## Braun Infolines

English	4
Français	8
Polski	13
Český	18
Slovenský	23
Magyar	28
Hrvatski	32
Slovenski	36
Türkçe	40
Русский	44
Українська	50
عربي	61

GB

0800 783 70 10

IRL

1 800 509 448

F

0 810 309 780

B

0 800 14 592

PL

0 801 127 286  
0 801 1 BRAUN

CZ

221 804 335

TR

0 212 473 75 85

RUS

8 800 200 20 20

UA

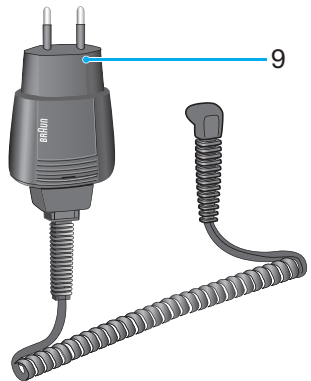
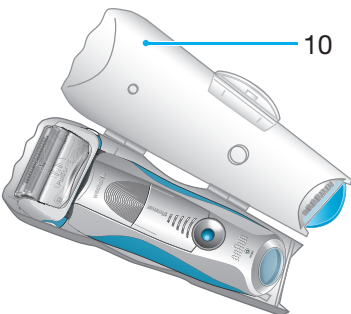
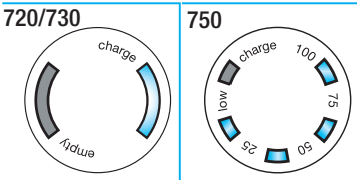
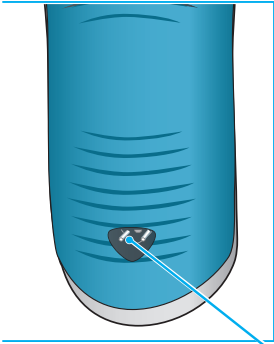
+38 044 428 65 05

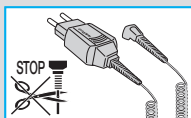
HK

852-25249377  
(Audio Supplies Company Ltd.)

[www.service.braun.com](http://www.service.braun.com)

Braun GmbH  
Frankfurter Straße 145  
61476 Kronberg/Germany





Our products are designed to meet the highest standards of quality, functionality and design. We hope you enjoy your new Braun Shaver.

## Warning

Your shaver is provided with a special cord set, which has an integrated Safety Extra Low Voltage power supply. Do not exchange or tamper with any part of it, otherwise there is risk of electric shock.

This appliance is not intended for use by children or persons with reduced physical or mental capabilities, unless they are given supervision by a person responsible for their safety. In general, we recommend that you keep the appliance out of reach of children.

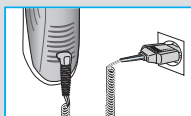
## Description

- ① Foil & cutter cassette
- ② Cassette release button
- ③ Shaver head «lock» switch
- ④ Pop-out long hair trimmer
- ⑤ On/off switch
- ⑥ «reset» button
- ⑦ Shaver display
- ⑧ Shaver power socket
- ⑨ Special cord set
- ⑩ Travel case

## Charging

The best environmental temperature for charging is between 5 °C and 35 °C.

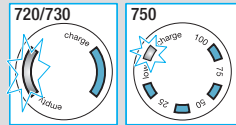
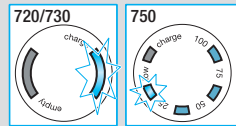
- Using the special cord set ⑨, connect the shaver to an electrical outlet with the motor switched off and charge it for at least one hour.
- A full charge provides up to 50 minutes of cordless shaving time. This may vary according to your beard growth.
- If the rechargeable battery has run out of power (discharged), you may also shave by connecting the shaver to an electrical outlet via the special cord set.



## Shaver display

The green charge segment(s) will flash when the shaver is being charged or when in use. When the battery is fully charged, the charge segment(s) will light up continuously provided that the shaver is switched on or connected to an electrical outlet.

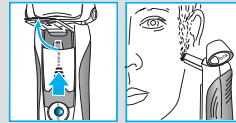
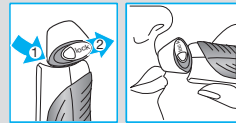
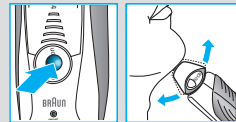
The red low charge/empty segment flashes when the battery capacity has dropped below 20%, provided the shaver is switched on. The remaining capacity will then be sufficient for 2 to 3 shaves.



## Shaving

Press the on/off switch ⑤ to operate the shaver:

- The pivoting shaver head and floating foils automatically adjust to every contour of your face.
- To shave hard to reach areas (e.g. under the nose) slide the shaver head «lock» switch ③ to the back position to lock the pivoting head at an angle.
- To trim sideburns, moustache or beard, slide the pop-out long hair trimmer ④ upwards.



### Tips for the perfect shave

For best shaving results, Braun recommends you to follow 3 simple steps:

1. Always shave before washing your face.
2. At all times, hold the shaver at right angles (90°) to your skin.
3. Stretch your skin and shave against the direction of your beard growth.

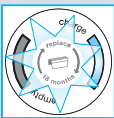
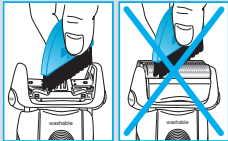
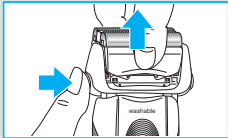
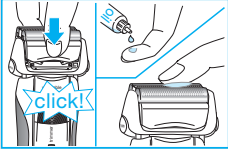
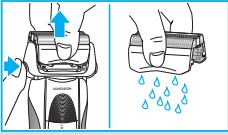
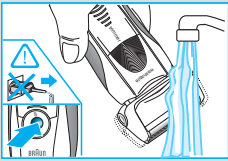


## Cleaning



The shaver head is suitable for cleaning under running tap water.

Warning: Detach the shaver from the power supply before cleaning the shaver head in water.



Regular cleaning ensures better shaving performance. Rinsing the shaving head under running water after each shave is an easy and fast way to keep it clean:

- Switch the shaver on (cordless) and rinse the shaving head under hot running water. You may use liquid soap without abrasive substances. Rinse off all foam and let the shaver run for a few more seconds.
- Next, switch off the shaver, press the release button ② to remove the foil and cutter cassette ① and let it dry.
- If you regularly clean the shaver under water, then once a week apply a drop of light machine oil on top of the foil and cutter cassette.

Alternatively, you may clean the shaver using the brush provided:

- Switch off the shaver. Remove the foil and cutter cassette ① and tap it out on a flat surface. Using the brush, clean the inner area of the pivoting head. However, do not clean the foil and cutter cassette with the brush as this may damage it.

## Keeping your shaver in top shape

**Replacing the foil and cutter cassette/reset**  
To maintain 100% shaving performance, replace the foil and cutter cassette ①, when the replacement symbol lights up on the shaver display ⑦ (after about 18 months) or when cassette is worn.

The replacement symbol will remind you during the next 7 shaves to replace the foil and cutter cassette. Then the shaver will automatically reset the display.

After you have replaced the foil and cutter cassette, use a ball-pen to push the «reset» button ⑥ for at least 3 seconds to reset the counter.

While doing so, the replacement light blinks and goes off when the reset is complete. The manual reset can be done at any time.

## Environmental notice

This appliance contains rechargeable batteries. In the interest of protecting the environment, please do not dispose of the product in household waste at the end of its useful life. Disposal can take place at a Braun Service Centre or at appropriate collection points provided in your country.



Subject to change without notice.

This product conforms to the European Directives EMC 2004/108/EC and Low Voltage 2006/95/EC.



For electric specifications, see printing on the special cord set.

### Guarantee

We grant 2 years guarantee on the product commencing on the date of purchase. Within the guarantee period we will eliminate, free of charge, any defects in the appliance resulting from faults in materials or workmanship, either by repairing or replacing the complete appliance as we may choose.

This guarantee extends to every country where this appliance is supplied by Braun or its appointed distributor.

This guarantee does not cover: damage due to improper use, normal wear and tear (e.g. foil & cutter cassette) as well as defects that have a negligible effect on the value or operation of the appliance. The guarantee becomes void if repairs are undertaken by unauthorised persons and if original Braun parts are not used.

To obtain service within the guarantee period, hand in or send the complete appliance with your sales receipt to an authorised Braun Customer Service Centre.

### For UK only:

This guarantee in no way affects your rights under statutory law.